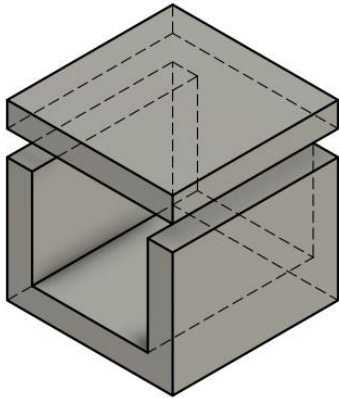



Fisa tehnica – CANIVOU ARMAT

carosabil

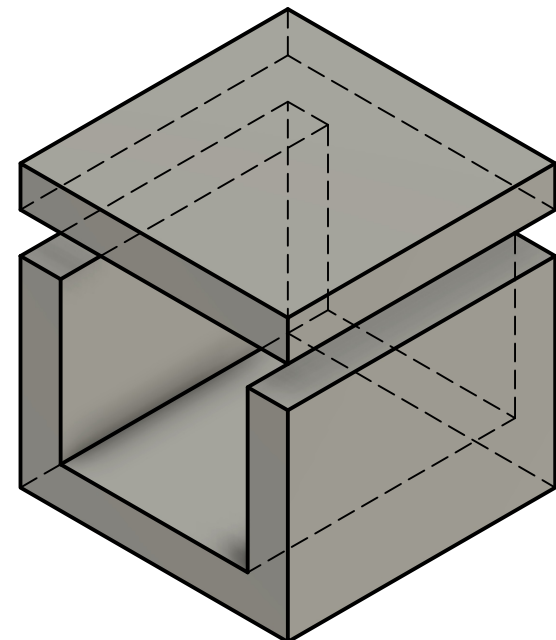
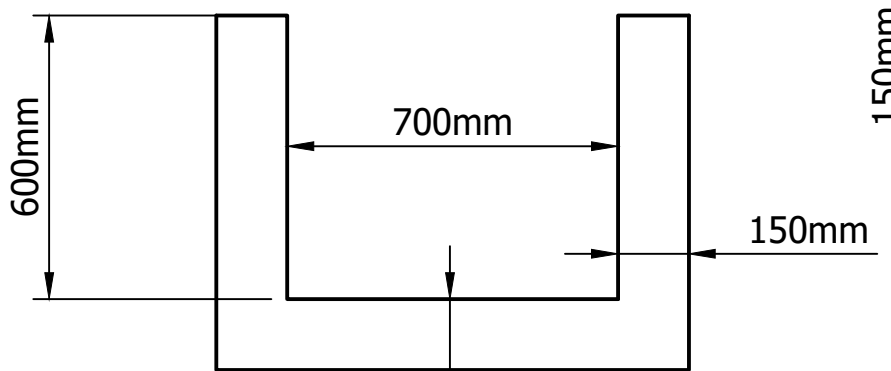
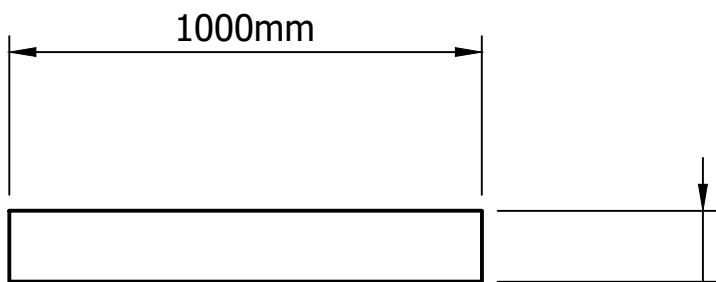
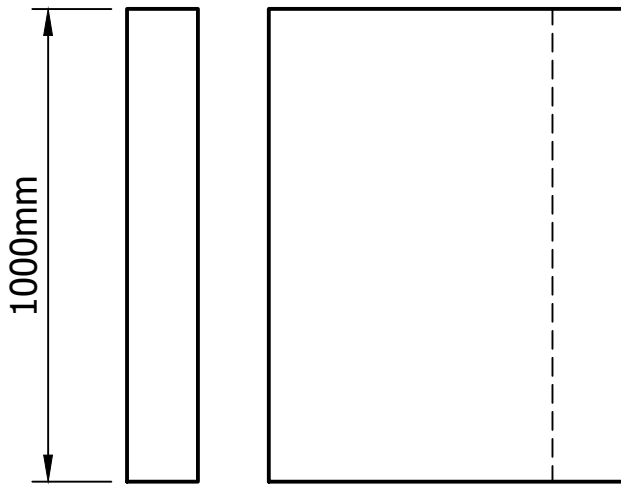
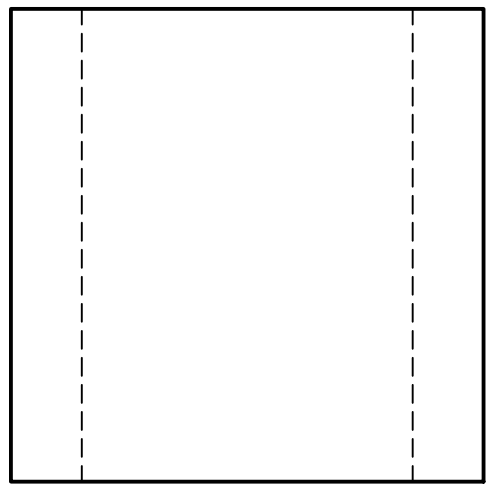
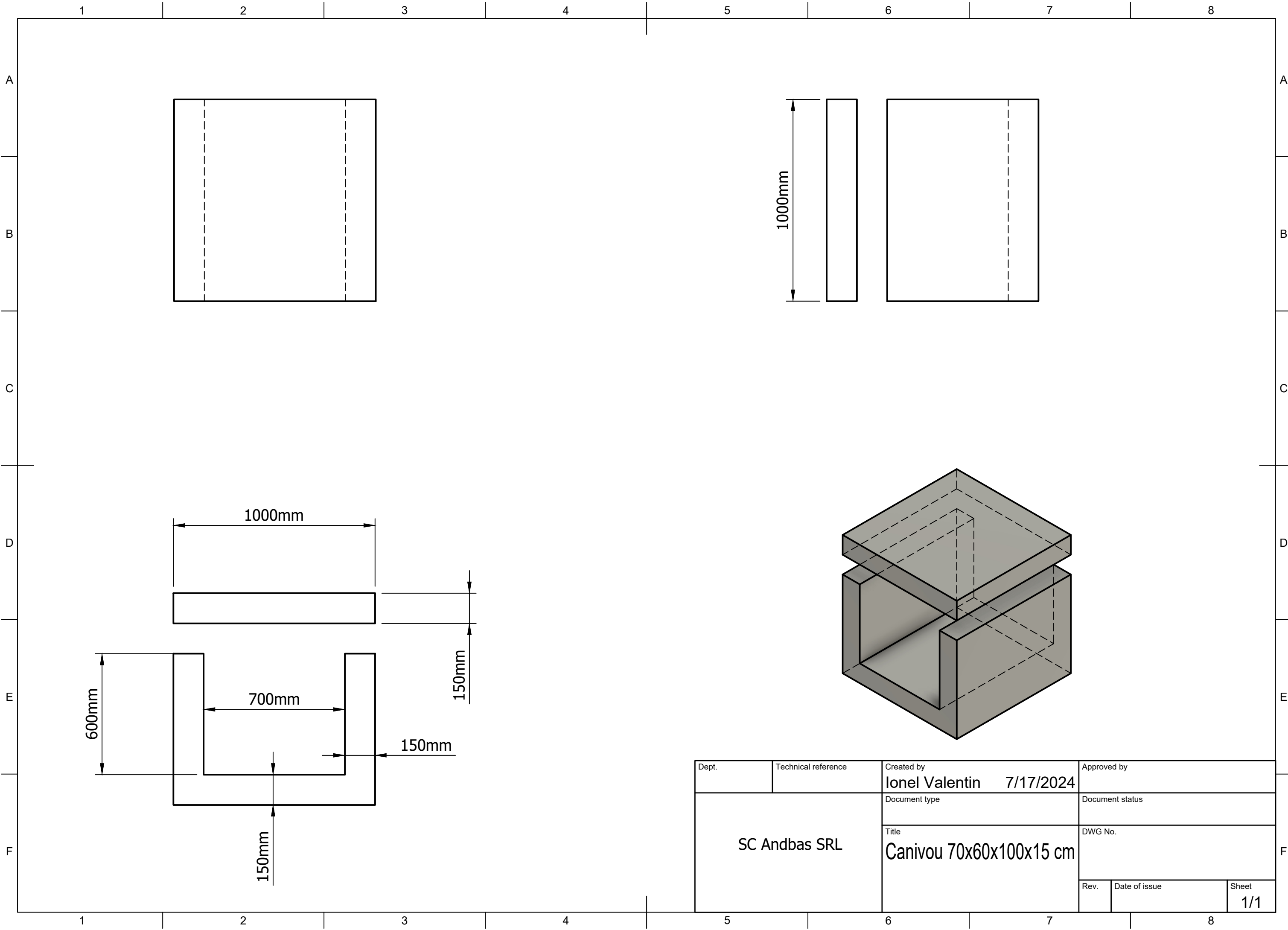
A.CARACTERISTICI FIZICE

Caracteristici	
Forme	
Dimensiuni	LUNGIME 100 cm, LATIME 100 cm, INALTIME 75 cm
Culori	gri Aspect suprafata beton monocrom
Ambalare	NEPALETAT
Masa	1100 kg / bucata
Domenii de utilizare	Protectie conducte 

B.PROCES DE FABRICATIE

Rigola carosabila dublu armata produsa de SC ANDBAS SRL este realizat din beton clasa C25/30, avand in compozitie:

- Ciment Portland CEM I 42,5 R, clasa C 25/30
- Agregate
- Aditiv MasterPozzolith 18BVC
- Armatura: OB 37 \varnothing 8, B500C \varnothing 10 .



Dept.	Technical reference	Created by Ionel Valentin 7/17/2024	Approved by
SC Andbas SRL		Document type	Document status
		Title Canivou 70x60x100x15 cm	DWG No.
Rev.	Date of issue	Sheet 1/1	